

Scania

Scania G450 / 8x2 / EURO 6 / FASSI 99TM / JIB / WINCH



Bouwjaar **2015**
referentie nummer **St_6045**
Kilometerstand **159,623**

Algemeen

Type **G450 / 8x2 / EURO 6 /
FASSI 99TM / JIB /
WINCH**
Locatie **Locatie 1**
Chassisnummer **YS2G8X200F2110967**
Eerste registratie **5-8-2015**
Brandstof **Diesel**
Prijs **Netto**

Gewichten

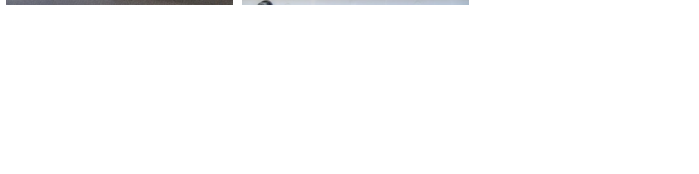
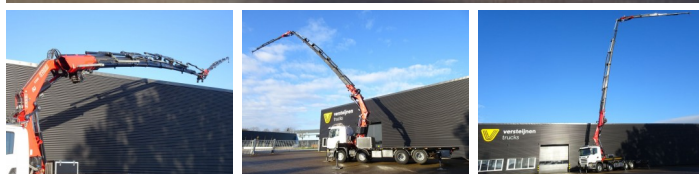
GVW **35.000**
Leeg gewicht **25.530**

Specificaties

Configuratie **8x2**
Euronorm **6**
Motorvermogen **450 pk**
Wielbasis **510**
Transmissie **Handgeschakeld**
Aantal versnellingen **12**

Banden / vering

Banden eerste as **70**
Bandenmaat eerste as **385/65R22.5**
Vering eerste as **Blad**
Banden tweede as **40**
Bandenmaat tweede as **385/65R22.5**
Vering tweede as **Blad**
Banden derde as **80**
Bandenmaat derde as **315/80R22.5**
Vering derde as **Blad**



| | |
|----------------------|--------------------|
| Banden vierde as | 40 |
| Bandenmaat vierde as | 315/80R22.5 |
| Vering vierde as | Blad |

Kraan

| | |
|-----------|--------------|
| Kraanmerk | Fassi |
|-----------|--------------|

Opties

Liftas
ABS/ASR/ESP
Zonneklep
1 Tank
Motor rem
Radio
Cruisecontrol
Electrische ramen
Electrische spiegels
Airco
Sper
Gereedschapkist
Vangmuil
Schijfremmen
Stoelverwarming